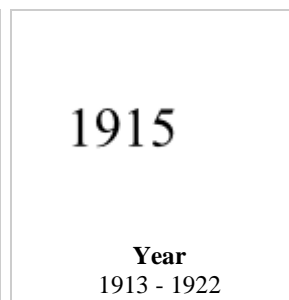
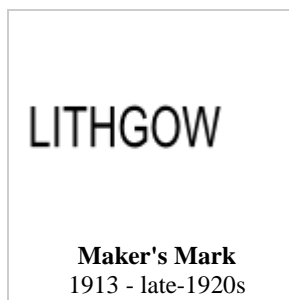
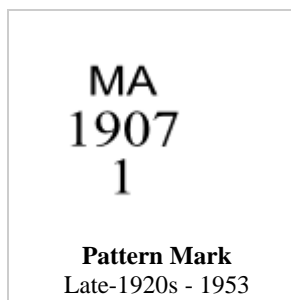
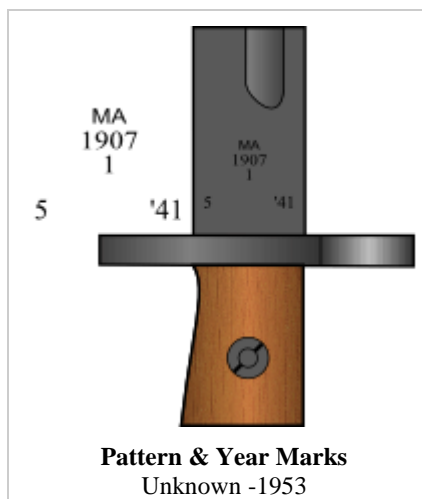
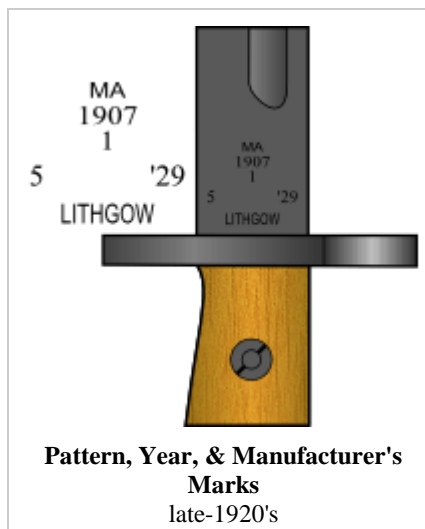
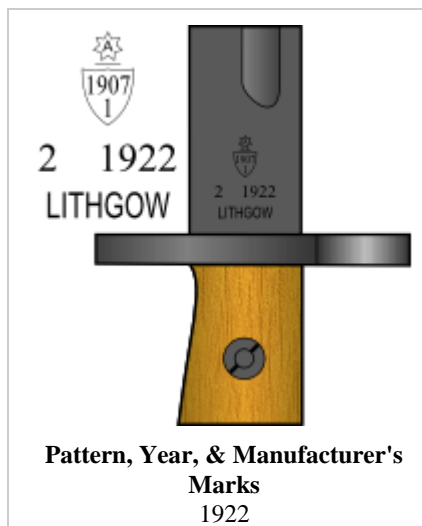
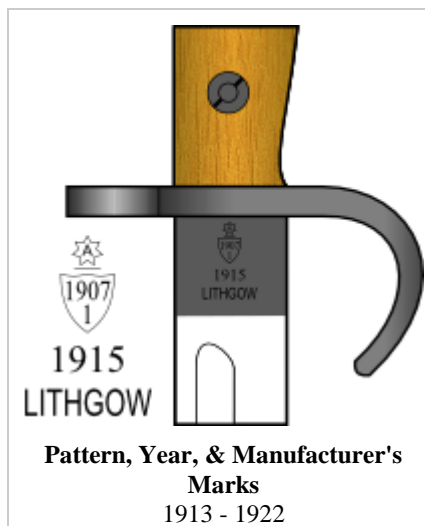
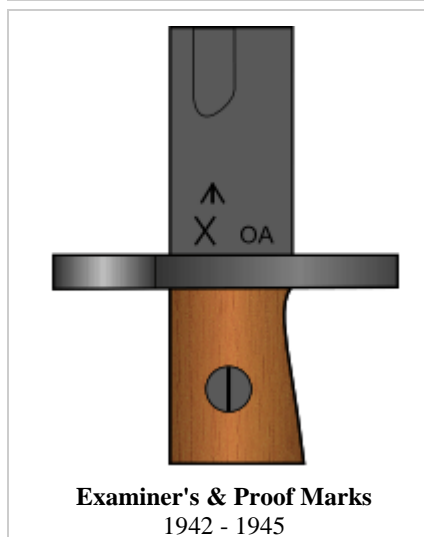
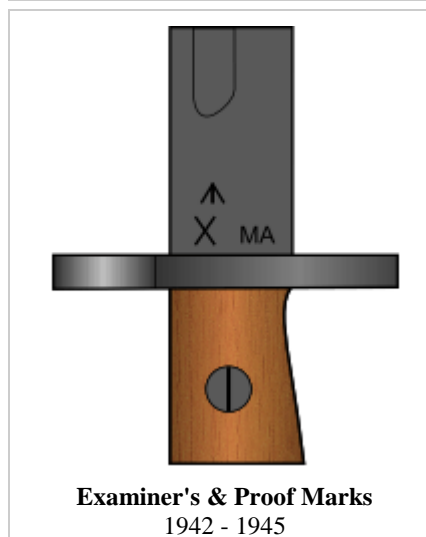
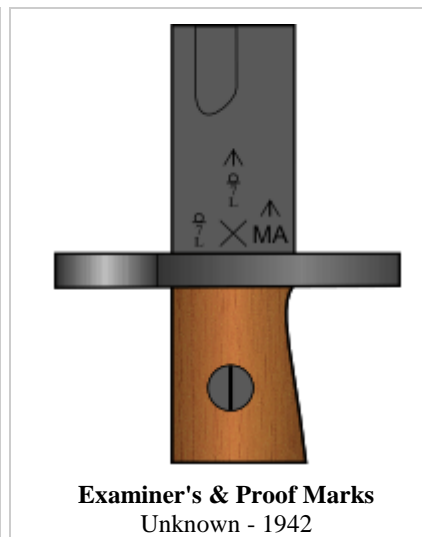
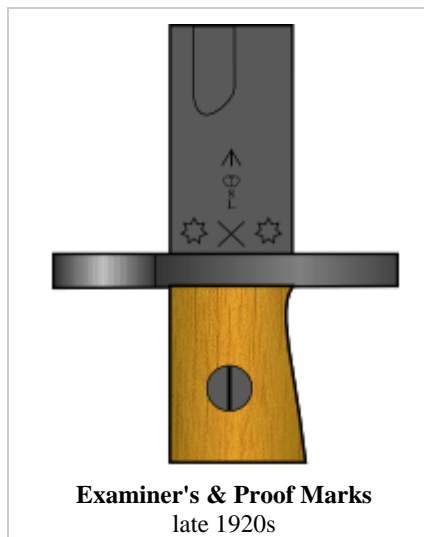
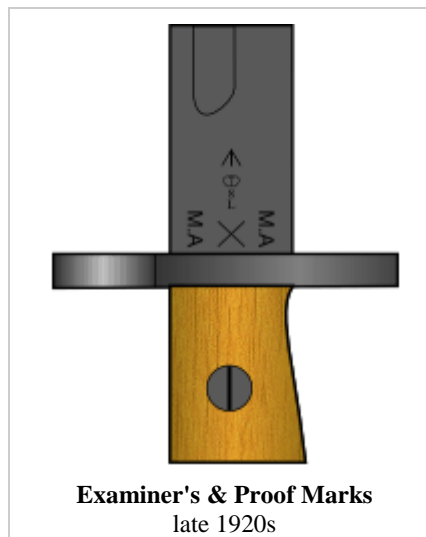
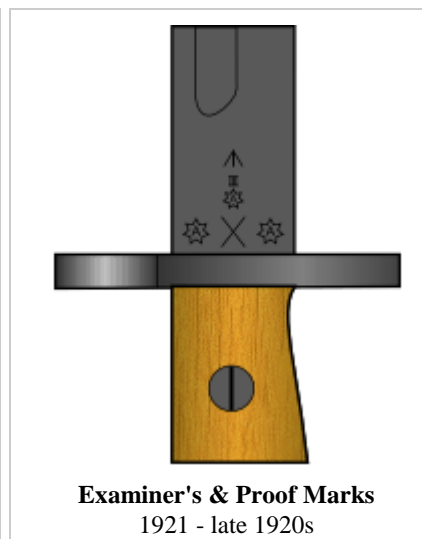
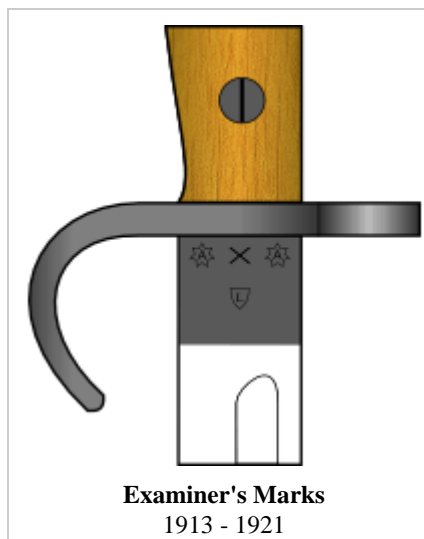
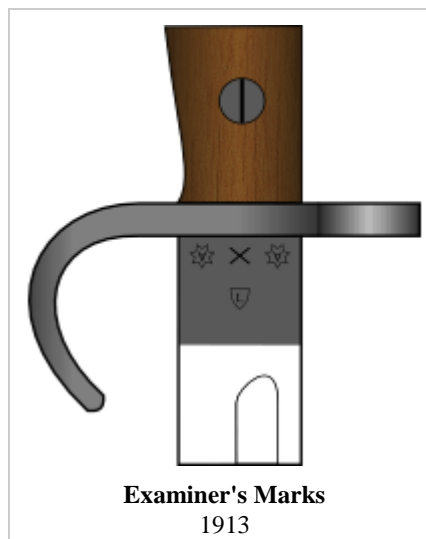


Pattern, Date and Manufacturer's Marks



Examiners & Proof Marks





**Mark Showing Convex
Side For Bending**
1913 - 1953



Examiner's Mark
1913 - mid-1920s



Examiner's Mark
1913 - mid-1920s



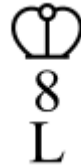
Examiner's Mark
1913 - mid-1920s



Examiner's Mark
mid-1920s



Examiner's Mark
mid-1920s



Examiner's Mark
mid-1920s - 1942



Examiner's Mark
Stamped on bayonets
made in the USA on Pratt
& Whitney machinery
being made for the
Lithgow Small Arms
Factory. Mark of William
Clarkson.